

Bridge Gate Court
Great Yarmouth



Plot 11

Entrance Hall

Cupboard and doors leading to;

Living Room/Kitchen 21' 7" x 12' 10" (6.57m x 3.90m)

Modern kitchen fitted with a range of high quality wall and base units with quality worktop, inset stainless steel 1.5 bowl & drainer sink with mixer tap, integrated oven with electric hob and extractor hood over, tiled splash-back, space for washing machine, power points, radiator, uPVC double-glazed windows.

Bedroom 1 13' 1" x 9' 8" (3.99m x 2.95m)

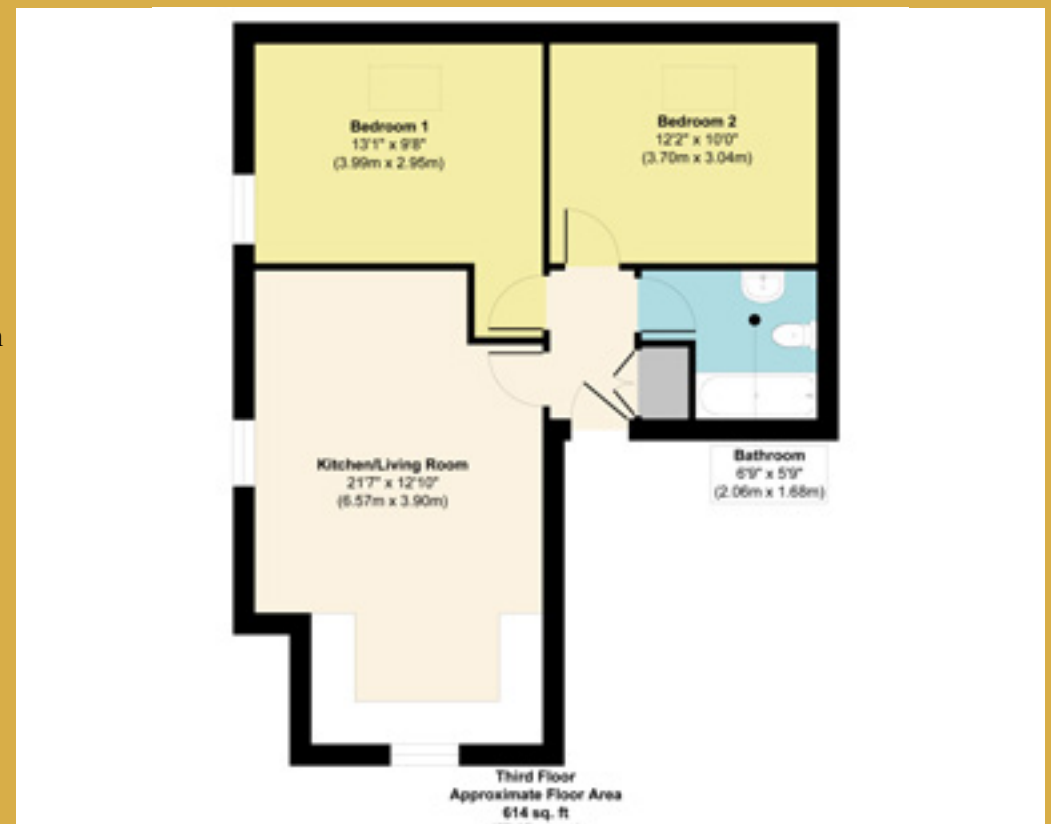
Power points, radiator, uPVC double-glazed windows.

Bedroom 2 12' 2" x 10' 0" (3.70m x 3.04m)

Power points, radiator, uPVC double-glazed window.

Bathroom 6' 9" x 5' 6" (2.06m x 1.68m)

Tiled floor, shower cubicle, vanity unit wash hand basin and wc.



Plot 12 & 13

Entrance Hall

Cupboard and doors leading to;

Living Room/Kitchen 17' 3" x 13' 7" (5.25m x 4.15m)

Modern kitchen fitted with a range of high quality wall and base units with quality worktop, inset stainless steel 1.5 bowl & drainer sink with mixer tap, integrated oven with electric hob and extractor hood over, tiled splash-back, space for washing machine, power points, radiator, uPVC double-glazed windows.

Bedroom 1 11' 8" x 9' 8" (3.55m x 2.95m)

Power points, radiator, uPVC double-glazed windows.

Bedroom 2 9' 8" x 7' 3" (2.95m x 2.20m)

Power points, radiator, uPVC double-glazed window.

Bathroom 6' 5" x 5' 4" (1.95m x 1.63m)

Tiled floor, shower cubicle, vanity unit wash hand basin and wc.





AGENT NOTES

EPC Rating - TBC

SERVICES

Mains Electric

Mains Drainage

Mains Water

CONTACT US

GORLESTON

38-39 Baker Street, Gorleston, Norfolk, NR31 6QT

Tel: 01493 805888

Email: enquiries@homesandland.uk

Agents Note

Whilst every care is taken when preparing details, HOMES & LAND RESIDENTIAL LTD., do not carry out any tests on any domestic appliances, which include Gas appliances & Electrical appliances. This means confirmation cannot be given as to whether or not they are in working condition. Measurements are always intended to be accurate, but they must be taken as approximate only. Every care has been taken to provide true descriptions, however, no guarantee can be given as to their accuracy, nor do they constitute any part of an offer or contract.